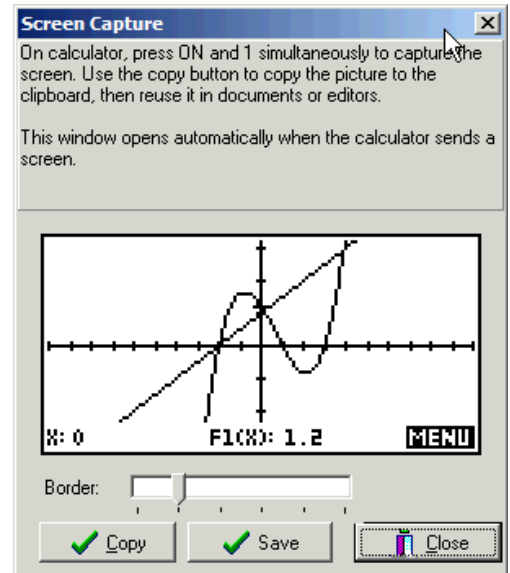


## Capturing screens using the Connectivity Kit

One of the more useful abilities of the Connectivity Software is its ability to capture images of the calculator screen. These images can be pasted into a document or into a Paint program for further processing. This allows teachers to create worksheets that include images of what the student should see. Students can create reports that include graphs and tables from your calculator.

Any screen can be captured at any moment, even if it is only partially drawn. The capture is triggered by pressing ON+1. This means holding down the ON key and, while still holding it down, pressing and releasing the 1 key then ON. When you do the image appears on the computer.



Once the image is captured it can be copied to the clipboard and pasted into another application. The software also allows it to be saved as a .BMP image file. All the images of calculator screens in this book were captured in this way.

## Capturing into the Sketch view

A variation of this capture process is useful if you want to retain the image on your calculator. Pressing ON+PLOT stores the image into graphics object G0. This can then be pasted into a sketch using the VARS menu. From the Sketch view, press VARS and then the **HOME** key. Scroll down to the Graphics variables and select G0. Now press **VALUE** and then ENTER. The image will be pasted into your sketch and you can then use the drawing tools to edit it. However, using a Paint program is generally easier and quicker.

